



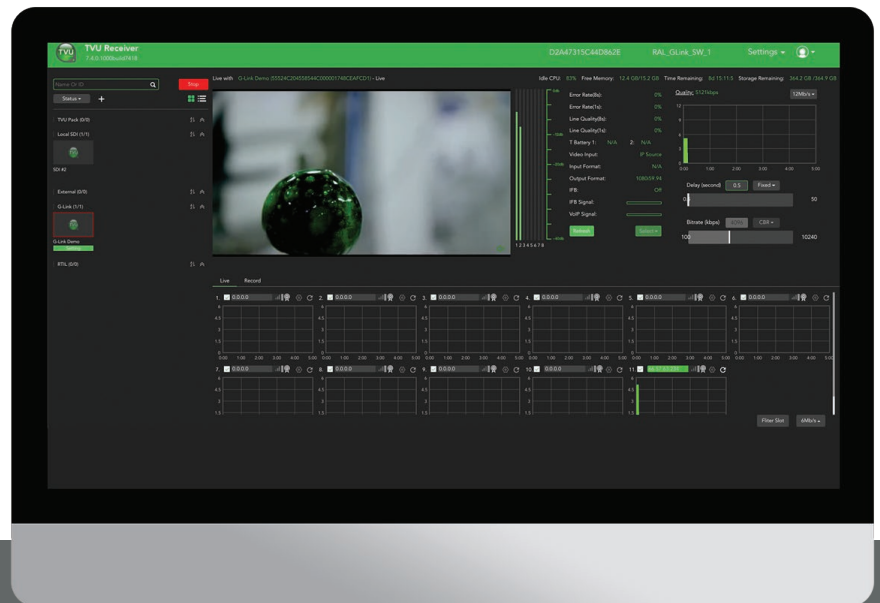
TVU G-Link™

Advantages

- △ Reliable, easy-to-use and affordable
- △ Designed to work with commodity internet
- △ Last-mile delivery via SDI and a wide variety of IP-based inputs and outputs
- △ Supports up to 2 bi-directional links (between two locations) or 4 unidirectional links (between two locations)
- △ Controllable via an intuitive and web based management platform

High-quality, low-latency point-to-point live video transmission.

TVU G-Link™ is an Internet-based solution for point-to-point live transmission that provides an affordable way for bidirectional sharing of live video between two locations. Designed to work over commodity internet, TVU G-Link™ can use either public internet or private network to send and deliver HD video.



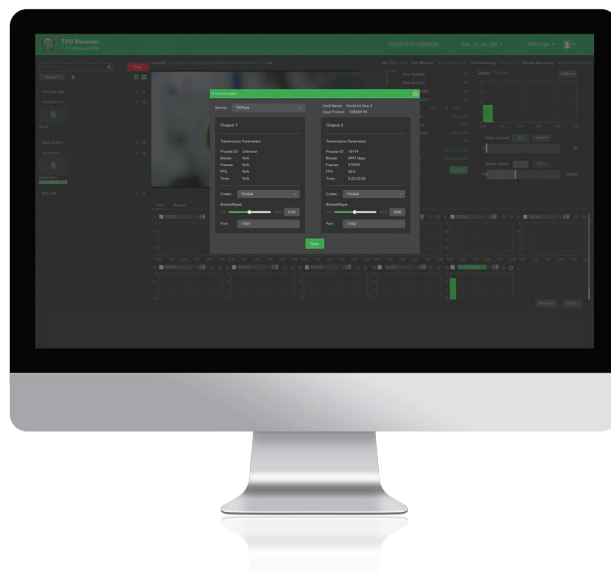
TVU G-Link™ Features

Simple yet versatile

The TVU Server is the primary hardware component of TVU G-Link™. With G-Link software licence, two servers are able to send and receive a broadcast quality video feed to/from each other simultaneously. A TVU Server with TVU G-Link™ software license takes a variety of incoming video types and formats, including incoming TVU One and TVU Anywhere transmissions, SDI input and external IP sources . A TVU Server with TVU G-Link™ software license also outputs in SDI and various IP formats in high resolution, and can also send feeds directly to social media platforms such as YouTube and Facebook via an optional IP streaming software.

Use TVU G-Link with other TVU Products

TVU G-Link™ works with a range of other TVU Products, including AP ENPS Integration, TVU Analytics, TVU Booking Service, TVU MediaMind and TVU Producer. Also, A TVU Server with TVU G-Link™ software licence can be easily upgraded with TVU Grid service license and subscription.



Technical Specifications

TVU One

1080i5994, 1080i50, 720p50, 720p60, NTSC, PAL

Audio Input

SDI embedded audio

SDI Input

1920x1080p
60/59.94/50/30/29.97/25/24/23.98 Hz
1920x1080i 60/59.94/50 Hz
1280x720p 60/59.94/50/30/29.97/25 Hz
720x480/576i 60/59.94/50 Hz
720x480/576p 60/59.54/50 Hz

External IP

YouTube, SMPTE 2022, RTMP, HLS, RTSP, UDP (unicast, multicast), SRT

Signal Output (Decoder)

SDI Output

1920x1080p
60/59.94/50/30/29.97/25/24/23.98 Hz
1920x1080i 60/59.94/50 Hz
1280x720p 60/59.94/50/30/29.97/25 Hz
720x480/576i 60/59.94/50 Hz
720x480/576p 60/59.54/50 Hz

IP Output Protocols

RTMP, HLS, RSTP, UDP (unicast, multicast)

IP Output Resolution

1920x1080, 1280x720, 960x540, 640x480, 720x480, 720x576, 480x360, 320x240, 352x288

IP Output Bitrates

8M, 2M, 1.2M, 850k, 450k, 200k

IP Output Bitrate Encoding

CBR/VBR

Recording

File format (.ts, .mov)

IP Output Audio Encoding

MP3/AAC/MP2, Stereo/Mono, 128k/64k/32k

Synchronization

Tri-level sync or black-and- burst

Transmission

Transmission Protocol

IS+ patented technology
 IP packaging method: ISSP
 Data correction: FEC
 High-efficiency re-transmitting method

Bitrate

SD/HD, 150kbps – 15Mbps
 Typical configuration: 2.5Mbps (SD),
 8Mbps (HD)

Bitrate Encoding

CBR

Audio Channels

8 Channels

Video Compression

H.264, H.265/HEVC

Picture-to-Picture Delay

500ms (public Internet)

Audio Compression

Audio Encoding Format: AAC/MP3
 Audio Bit-Rate: 256K/128K/64K
 Sampling: 48KHz/16-bit

Other

OS

Linux

Operating Method

Local and Web- based GUI

Hardware Performance

VS3500/Linux

4 pack source/external IP/SDI input and
 G-Link output, or 4 G-Link input

3200/Linux

2 pack source/external IP/SDI input and
 G-Link output, or 2 G-Link input

VS3100/Linux

2 pack source/external IP/SDI input and
 G-Link output, or 2 G-Link input



www.tvunetworks.com
 857 Maude Avenue, Mountain View, CA, 94043
 + 1.650.969.6732